

Contents

Adding and Converting Videos.....	3
Adding Files to the Input Video List.....	3
Convert One or More Videos to a Different Format	3
Viewing Video Details.....	6
Saving Detailed Settings	7
Viewing the Conversion Log	8
Stopping Video Conversion	9
Removing Files From the Input Video List	10
Previewing Videos	11
Adjusting Video Output Volume	12
Taking Snapshots.....	13
Clipping Videos	14
Setting the ACDSee Video Converter Options	15
Changing the ACDSee Video Converter Skin	18
Burning a DVD Disc	19
Creating an ISO	20
Ripping a DVD	21
Uploading Your Videos to YouTube®	22
Supported Formats and Devices	23



WWW.ACDSYSTEMS.COM

ACDSee Video Converter is a simple-to-use HD video converter that can convert video files between most popular media formats at high quality and speed. Its smart video aspect ratio algorithm helps you get rid of distracting black borders and make full use of your mobile media player screen. You can also use it to extract your favorite MP3 audio from downloaded video files.

Set and Forget

Designed to be used with your mobile media player, ACDSee Video Converter lets you create a to-do list of videos to convert, and set the program to shut down after conversion is completed, or pause/re-start the conversion at your convenience.

Convert Videos and Audio Among All Popular File Formats

Convert between all kinds of video and audio formats, including AVI, MP4, MKV, FLV, 3GP, 3G2, WMV, MOV, VOB, MPG, PSP, M4V, VCD, DVD, ARM, ASF, AVS, SWF, MPEG, MTV, OGG, H261, H263, H264, MP3 and more. See a complete list of [supported formats and devices](#).

Adding and Converting Videos

You can queue a list of files to be converted to a number of different file types to be played on a variety of devices.

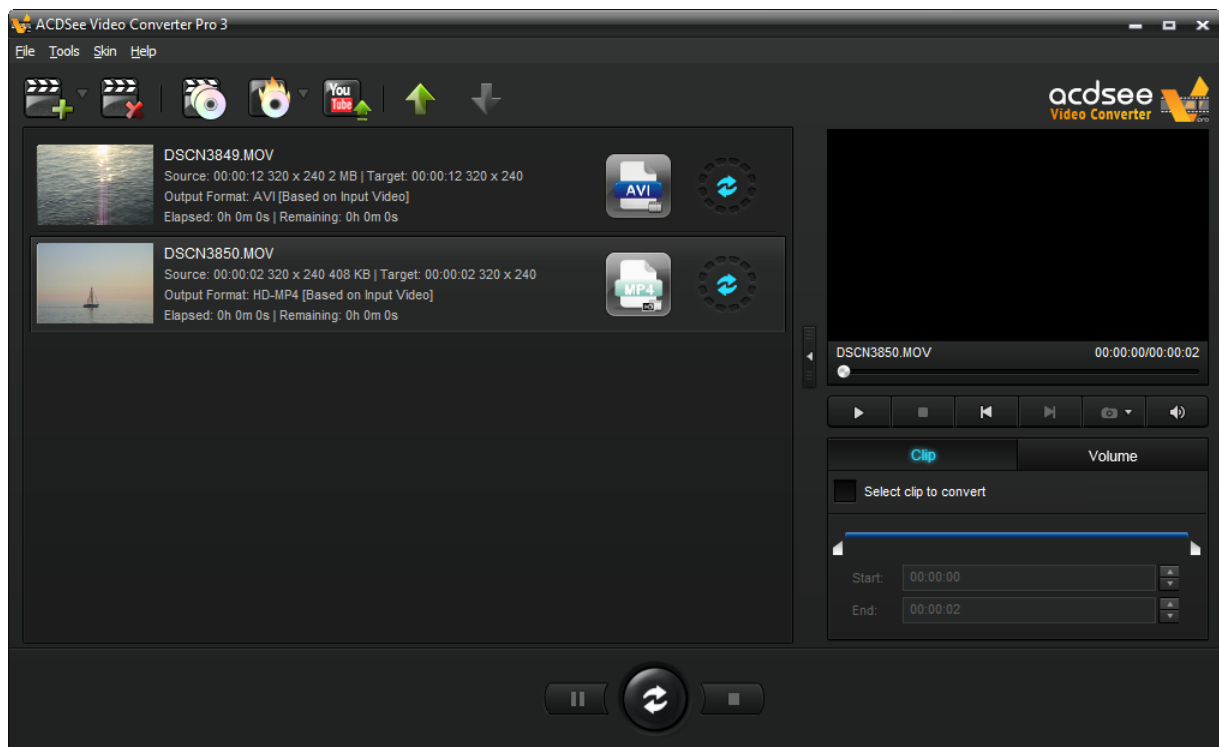
Adding Files to the Input Video List

You can add files to the Input Video List in preparation for conversion.

To Add Files:



1. Click the **Add Video** button.
To add a folder, select **Add Folder** from the drop-down menu.
2. Select one or more files from the **Add Video Files** dialog box. Use CTRL + click to select multiple files. Press **Open**.




Convert One or More Videos to a Different Format

After you have added your files to the Input Video List, you can convert them to a wide variety of formats.

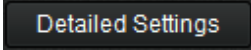
To Convert Videos:

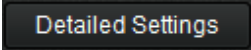
1. Select the video you would like to convert. If you would like to select multiple files, do one of the following:
 - Drag your cursor over the files.
 - Press CTRL while clicking the specific files you want.



2. Your files display an icon of their current format. Ex.)  Click this icon to open the **Choose Format** dialog box. Configure your format settings as described in the table below.

Choose Format Dialog Box

Output Type	Select the output type you would like to convert your files to from the drop-down menu according to the device you would like to play your video on.
Output Format	Select the specific device from the drop-down menu of options available for the output type you selected. Next, select from the drop-down menu of parameters for that device.
Format Details	<p>This section displays the format details of the output you have selected, including:</p> <ul style="list-style-type: none"> •Video Frame Size •Video Bitrate •Video Codec •Audio Codec •File Format <p>This section also includes the  button. Click the Detailed Settings button and configure the options as described in the Detailed Settings Dialog Box table below.</p>
Split Split By	<p>If you would like to split your video, check the Split By checkbox and select whether you would like to split your video by:</p> <ul style="list-style-type: none"> •Size (in MB) <p>or</p> <ul style="list-style-type: none"> •Time (in minutes)
Apply to all	Check this box to apply the above settings to all of the files in the Input Video List.

3. Once a new Output Type has been selected, the  button becomes enabled. Click the **Detailed Settings** button to alter additional video and audio parameters.

Changes made within the **Detailed Settings** dialog can be saved as a [User-Defined Profile](#).

Detailed Settings Dialog Box

Format		
Video Parameters	Codec	Video codec specifies the type of video data compression you would like ACDSee Video Converter to use.
	Size	Select the video image size.
	Bitrate	Select the bitrate to determine how much data will go to the screen per second on playback. A higher bitrate allows for a higher quality

		picture, however, it also increases the file size.
	Frame Rate	Select the frame rate to determine how quickly the picture refreshes.
Audio Parameters	Codec	Codec specifies the type of audio data compression you would like ACDSee Video Converter to use.
	Sample	Sampling describes the data rate of a sound recording. A higher sample rate allows for higher quality sound, however it also increases the file size.
	Channel	From the drop-down menu, select 1 to have the same sound come out of the left and right speakers, or, 2 , to have different sound come out of the left speaker versus the right.
	Bitrate	Select the bitrate to determine how much audio data will go to the speakers per second on playback. A higher bitrate allows for a higher quality sound, however, it also increases the file size.

4. Click **OK** to close the Detailed Settings dialog box.
5. Click **OK** to close the Choose Format dialog box.
6. To specify further conversion and completion settings, such as setting where your completed files should be placed, see [Setting the ACDSee Video Converter Options](#).

7. Click the **Convert** button to begin the conversion.



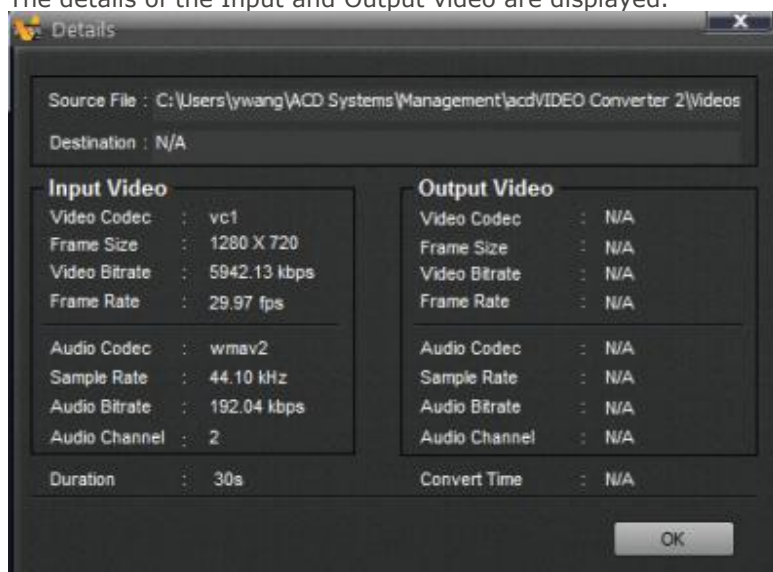
Once converted, you can locate the output video by right-clicking the file and selecting **Locate Output Video**.

ACDSee Video Converter converts all files in the Input Video List. If you have converted a file and then add another file to convert, [remove](#) the previously converted file from the list, unless you would like to convert it to another format.

Viewing Video Details

To View the Details of an Added Video File:

- Right-click the file in the Input Video list and select the **Details** option. The details of the Input and Output video are displayed.



Saving Detailed Settings

Changes made within the Detailed Settings dialog can be saved as a User Defined profile.

To Save the Detailed Settings as a User Defined Profile:

1. Click the **Detailed Settings** button (if enabled).
2. Modify the settings.
3. Click **OK**.
4. In the confirmation dialog that appears, click **OK**.
5. Enter the name for the profile and click **OK**.

To Select Your Saved Detailed Settings:

1. From the Main window, click the **Choose Format** button. Ex.)
2. Click the **Output Type** drop-down arrow and select the **User Defined** option.
3. Click **OK**.



Viewing the Conversion Log

After a file is converted, a log of the conversion details is generated. You can view the information and click the **OK** button to close the window.

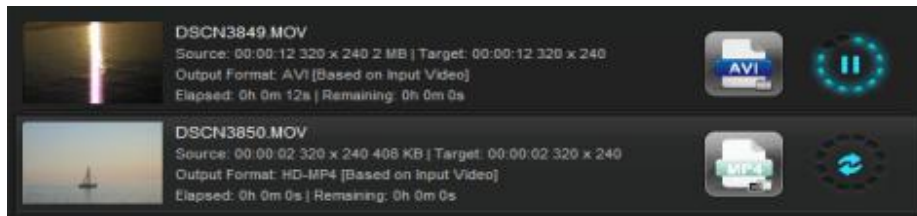
You can view the conversion log at any time.

To View the Conversion Log:

- From the Main window, click **Tools** and select **Conversion Log**.

Stopping Video Conversion

While the file is converting, a progress spinner is displayed around the Convert button, as seen below.



To Cancel the Conversion:

- Click the **Stop** button, found to the right of the Convert button:



You can then choose to convert your file to another format, or remove it from the list and add another video file.

Right-click a file to view the context-menu.

Removing Files From the Input Video List

You can remove files that have been added to the Input Video list.

To Remove Files, Do One of the Following:

- Select one or more files and click the **Remove** button.
- Right-click the file and select the **Remove** option.



Previewing Videos

This feature allows you to preview the selected video.

To Preview Your Videos:

1. Select the video file you want to preview from the Input Video List.
2. In the Previewer pane to the right side of the Main window, use the following buttons to play and control your video:



Play the video.



Pause the video.



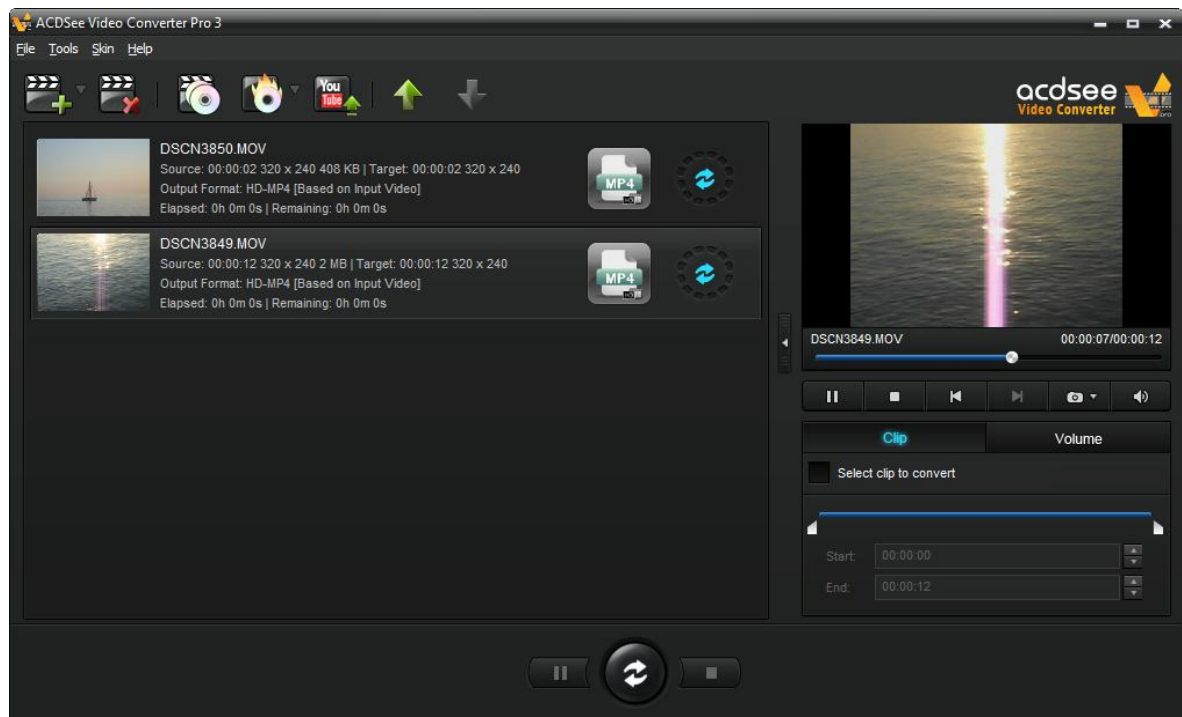
Stop the video.



Return to the previous video in the Input Video List.



Advance to the next video in the Input Video List.



Adjusting Video Output Volume

This feature allows you to adjust the volume of your video files before converting them.

To Adjust Audio Track Volume:

1. Select the file you would like to adjust the output volume of in the Input Video List.
2. Click on the **Volume** tab.
3. Adjust the volume slider to the desired volume.
4. Play your video in the Previewer to check that the volume level is appropriate.



5. Click the **Convert** button to begin the conversion.



Taking Snapshots

This feature allows you to take screen captures of your videos.

To Create a Snapshot, Do One of the Following:


- Click on the snapshot button in the Previewer controls. 
- Click on the drop-down arrow of the snapshot button  in the Previewer controls, then select **Snapshot**.

To Locate Your Snapshots:

To locate your snapshots, you must open the snapshot folder.

1. Click on the drop-down arrow of the snapshot button. 
2. Select **Open Snapshot Folder**.



To Change the Snapshot Format:

1. Click on the drop-down arrow of the snapshot button. 
2. Click **Snapshot Format** and choose a format.

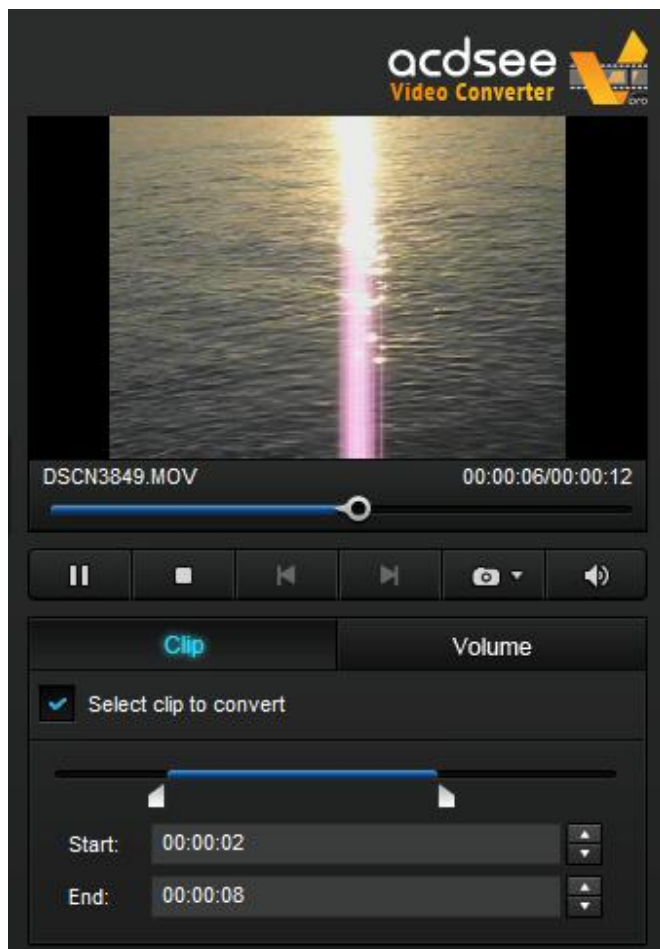
Clipping Videos

This feature allows you to clip out segments you want from the source video file. You can then convert or perform any other action with that clipped segment.

To Clip a Video

1. Select the file you want to clip in the Input Video List.
2. Check the **Select clip to convert** box on the Clip tab of the Previewer pane.
3. Slide  and  to cover the segment of the video you want to convert.

4. Click the **Convert** button to begin the conversion.



Setting the ACDSee Video Converter Options

Settings include options you can configure to customize and automate ACDSee Video Converter's functionality.

After making changes, you have the option of returning to the original default settings.

To View the Options and Make Changes:

- From the Main window, click **Tools | Options**.
You can view and change the settings as described in the table below.

To Save Changes and Close the Options Window:

- Click **OK**.

To Close the Options Window Without Saving Changes:

- Click **Cancel**.

To Return to the Original Default Settings:

- Click **Reset**.

The Options Dialog Box

General Tab	These settings affect the basic operations of ACDSee Video Converter.	
Application Behavior		
	Automatically check for updates.	ACDSee Video Converter will automatically ensure that you are running the latest version.
	On exit, prompt if still executing.	ACDSee Video Converter will warn you if you are trying to close the application while an action is still being performed, such as burning a DVD or converting a video.
	Show <Getting Started Guide> on startup.	This displays the Getting Started instructions in the Main Window each time you open the application.
	Prompt when removing tasks.	When you remove files from the Input Video List, ACDSee Video Converter double checks that you want to continue this action.
	Prompt when adding unsupported files.	ACDSee Video Converter will notify you when you are trying to add files to the Input Video List that are not supported by the program.
Conversion Tab	This tab includes options for converting your videos.	

Video Aspect Ratio	Aspect ratio is the ratio of the width of the video to its height.	
	Keep input video aspect ratio.	When trying to convert a file with an inconsistent input video and output video size, ACDSee Video Converter will maintain the aspect ratio of the video zoom. In other words, the picture will not be stretched or cropped.
	Pad extra spaces around input video to fit output video aspect ratio.	When the input video and output video size are inconsistent, ACDSee Video Converter will fill the empty areas around the picture.
	Automatically clip the edges of the input video to fit output video aspect ratio.	ACDSee Video Converter will clip the picture to fit the screen when the input video and output video size are inconsistent.
CPU		
	Executing when CPU is normal.	ACDSee Video Converter will run your conversion tasks when your computer is in normal operation mode. This may have a negative impact on how fast other programs run at the same time.
	Executing when CPU is idle.	ACDSee Video Converter will run your conversion tasks when your computer is idle. This will ensure that the conversion process will not have a negative impact on how fast other programs run.
Number of Tasks	You can select up to three concurrent conversion tasks.	
Completion Tab	These settings define how the program responds after conversion is complete.	
Conversion Completion Settings		
	Output Directory	You can select the location where you would like the converted files to be placed.
	Show notification for ... seconds when all tasks are completed.	Select how long you would like to receive notification for once your conversion tasks have been completed.
	Play sound ... when a task is completed.	Select a sound to be played as notification once your conversion tasks have been completed.
	Close ACDSee Video Converter after completing all tasks.	Check this option to have ACDSee Video Converter close when all conversion tasks have been completed.

Changing the ACDSee Video Converter Skin

You can change the look of ACDSee Video Converter by choosing between various skins.



To Change Skins:

1. Select the **Skin** drop-down from the Main toolbar.
2. Choose a skin from the drop-down list.

Burning a DVD Disc

You can burn your video files onto DVD to watch on your TV or computer.

To Burn Your Video to DVD:

1. Insert a blank DVD into your disc drive. Your operating system may prompt you about what action you would like to take with your blank DVD. Close these dialogs.
2. In ACDSee Video Converter, Click the **DVD Operations** icon and select **Burn DVD Disc** from the drop-down menu. 
3. The Burning Disc dialog box will open. Configure the settings as described in the table below. 
4. Press the **Convert** button to begin the burning process.
5. Click **OK**.

Burning Disc Dialog Box

Drive Info	
DVD Title	Type a name for your DVD.
Drive drop-down menu	Select the drive where your blank DVD is located.
File Path	Browse to find the video you would like to burn.
Television	
Television System	Choose the Television System settings, <ul style="list-style-type: none">• NTSC or <ul style="list-style-type: none">• PAL to set the video standard for your DVD based on your region.
Video Scale	Choose between a <ul style="list-style-type: none">• 4:3 or <ul style="list-style-type: none">• 16:9 width to height ratio, depending on the size of the screen your DVD will be played on.
Disc Type	<ul style="list-style-type: none">• Set DVD5 (4500MB) for a single-sided disc.• Set DVD9 (8500MB) for a double-sided disc.

Creating an ISO

You can create a packaged ISO file.

To Create an ISO:

1. In ACDSee Video Converter, click the **DVD Operations** icon and select **Burn DVD ISO** from

the drop-down menu.




2. The Burning ISO dialog box will open. Configure the settings as described below.



3. Press the **Convert** button to begin creating.

Burn ISO Dialog Box

ISO Name	
File Name	Press the Browse button, select the location you would like to put the packaged ISO file and enter a name for the file in the field. 
Video Files	
File Name	Browse and select the video files you would like to package.
ISO Format	
Specify the ISO file package type.	
ISO9660	<p>This is the original file system for CD data discs and is recognized on most operating systems. Choose:</p> <ul style="list-style-type: none">•Level 1•Level 2 <p>Level 1 offers the most interoperability, but requires file names that are upper case and limited to eight characters with a three-character extension, similar to a DOS file name, but only alpha, numeric and underscore may be used. Level 2 supports longer, more unique file names, but may not be supported on every drive. Another disadvantage is that files may only be stored in a directory structure no more than eight levels deep.</p>
ISO9660 + Joliet UNICODE name extension	<p>This file system acts the same way as ISO9660, but does not have the same restrictions on file names. This file system allows for a file name up to 64 characters long and can include non-Roman characters. It also supports a deeper directory structure. This format should be selected if there may be any concern about compatibility on the devices the disc will be used with.</p>
UDF	<p>The preferred disk format, UDF (Universal Disk Format) allows an operating system to read, write and modify data stored on optical media created by a separate operating system.</p>

Ripping a DVD

You can extract the files contained on a DVD.

To Rip a DVD:

1. Insert the disc you would like copied to your computer.
2. In ACDSee Video Converter, select the **DVD Ripping** button.
3. In the Ripping Disc dialog box, select the Source Disc, (what drive your DVD is located on), from the drop-down menu.
4. Under Output Directory, click **Browse** to specify where you would like the copied files to go.
5. Press **OK**.





6. Press the **Convert** button to begin copying.

Uploading Your Videos to YouTube®

You can upload your video content to YouTube to share privately with friends or publicly with the YouTube community.

To Upload Your Videos to YouTube:

1. Click the **Upload to YouTube** button  and fill in the fields in the **Upload** dialog box, as described in the table below.
2. Click **OK**.
3. Click the **Convert** button.  Your video will be uploaded to YouTube as soon as the progress spinner is complete. If you have opted to share your video on Facebook or Twitter, they will now open in your browser and prompt you to enter your user name and password.
4. Navigate to YouTube.com to see or share your video.

Upload Dialog Box

Upload video information	
Account	Enter your YouTube user account name. <ul style="list-style-type: none">•Add: saves your user account name.•Delete: deletes your user account name.
Password	Enter your YouTube account password.
Upload Video	Select Add File to locate the video you would like to upload.
Title	Enter a title for your video.
Description	Enter a description of your video.
Category drop-down	Select the category you would like your video to be listed under on YouTube.
Tags	Enter tags you would like to assign to your video. These tags will help to determine when your video shows up in searches on YouTube.
Private checkbox	Check the Private checkbox if you want your video to be only visible to you.
Share on Facebook checkbox	Check the Share to Facebook checkbox if you want to share your video on Facebook. After you have uploaded your video to YouTube, Facebook will open and you will be prompted to enter your Facebook user name and password.
Share on Twitter checkbox	Check the Share to Twitter checkbox if you want to share your video on Twitter. After you have uploaded your video to YouTube, Twitter will open and you will be prompted to enter your Twitter user name and password.

Supported Formats and Devices

Supported Input Video Formats

3g2	mtv
3gp	mve
4xm	mxp
asf	nsx
avi	nut
avs	pva
cpk	r3d
dif	rm
dv	rmvb
dxa	roq
f4v	rpl
flic	seq
flv	smk
h261	str
h263	swf
h264	thp
m1v	ts
m2ts	vqa
m2v	vid
m4v	vob
mjpg	vro
mjpeg	wc3
mkv	webm
mov	wmv
mp4	y4m
mpg	yuv
mpeg	
mts	

Supported Output Video Formats

3gp	mpeg1
asf	mpeg2
avi	ogg
dv	TS
flv	vob
m4v	wmv
mkv	
mov	
mp4	

Supported Output Devices

Apple

Apple TV	iPhone 4S
iPad	iPhone 5
iPad 2	iPod Touch
iPad 3	iPod Touch 4
iPhone	iPod Classic
iPhone 3G	iPod Nano
iPhone 4	

Nokia

2730
2700 Classic
3000
5000
5130
5230
5233
5235
5530
5630
5800 ExpressMusic
6000
6300
6700
7000
7230
8000
C5
C6

Samsung

Behold
C3010
C3303
Captivate
Corby
Epic 4G
Fascinate
Focus
Galaxy 5
Galaxy Ace
Galaxy S
Galaxy S3
Galaxy SII
Galaxy Spica
Galaxy Tab
Galaxy Tab 10.1
Gusto
Gravity Touch
GT B7722
I7500
I900 Omnia
Intensity
Intercept
Mesmerize
Metro 3530

RIM Blackberry

8520
8700
Bold 9000
Bold Series
Curve 8300
Curve 8310
Curve 8500
Curve 8900
Pearl 3G
Pearl 8100

LG

Ally VS740

C7
E63
E71
E72
E75
E90
N7x
N8 10 Internet Tablet
N8x
N9x
N76
N79
N82
N86
N95
N96
N97
N900
X3
X6

Moment
Mythic
Omnia 2
OmniaLite B7300
Reality
Rugby
S3310
S3370
S5233A
S5620 Monte
S7230
SGH-E1XX_E7XX
SGH-F480I
SGH-F488E
SGH-F-J
SGH-F-X
SGH-G/I/U/D/W/E8XX
SGH-M/L
SGH-P
SGH-W-U-I
Solstice
Star S5230
Strive
Transform
Wave723
YP Q1

Pearl 8120
Pearl 8220
Pearl 8800
Pearl 8830
Pearl Flip
Playbook
Storm 3G
Storm 9500
Storm Series
Torch 9800
Tour Series

KP500

Arena GT950
Banter AX265
Banter UX265
Bliss UX700
Chocolate Touch VX8575
Dare VX9700
enV Touch VX11000
Fathom VS750
GB210
GD510 Cookie Pop
GM200
GW820
Incite CT810
KM900 Arena

HTC

7 Mozart
7 Pro
Aria
Arrive
Desire HD
Diamond
Dream
Droid Eris
Droid Incredible 2
EVO 4G
Flyer
HD2
HD 7
Hero
Imagio
Inspire 4G

Motorola

A/E/Q/VE/V/U Series
Atrix
Backflip
Bravo
CLIQ/CLIQ XT
Devour
Dext
Droid2
DroidX
Droid Series
EM
Flipout

Sony Ericsson

Equinox
Vivaz
W518A
W580I

Microsoft

Zune

Game Consoles

PS3
PSP

Portable Media Players

KP500 Cookie
KS360
Neon GW370
Optimus 2x
P500
Prime
Quantum
Spyder 2 LG840
Tritan UX840
Versa VX9600
Vortex
VU CU915
VU CU920
Xenon GR500

Legend
Magic
MyTouch 3G
MyTouch 4G
Sensation
Surround
T-Mobile G1
Tattoo
Thunderbolt
Touch HD
Vivid
Wildfire

i1
Milestone
Motorokr E6
Quench
Razr
V3 Series
V3X
W270/W50
XOOM
XT720
Z/ZN/L Series
Z3

W700I
Xperia Arc
Xperia x8
Xperia x10

Wii
Xbox

Archos
Creative

Iriver