

acdsee™
VIDEO CONVERTER 4
PRO

acdsee™
VIDEO CONVERTER 4
PRO



Contents

Welcome to ACDSee Video Converter	2
Adding and Converting Videos	3
Adding Files to the Input Video List	3
Convert One or More Videos to a Different Format	4
Viewing Video Details	7
Saving Detailed Settings	8
Viewing the Conversion Log	9
Stopping Video Conversion	10
Removing Files from the Input Video List	11
Previewing Videos	12
Adjusting Video Output Volume	13
Taking Snapshots	14
Clipping Videos	15
Setting the ACDSee Video Converter Options	16
Changing the ACDSee Video Converter Skin	19
Burning a DVD Disc	20
Creating an ISO	22
Ripping a DVD	24
Uploading Your Videos to YouTube®	25
Supported Formats and Devices	26

Welcome to ACDSee Video Converter

ACDSee Video Converter is a simple-to-use HD video converter that can convert video files between most popular media formats at high quality and speed. Its smart video aspect ratio algorithm helps you get rid of distracting black borders and make full use of your mobile media player screen. You can also use it to extract your favorite MP3 audio from downloaded video files.

Set and Forget

Designed to be used with your mobile media player, ACDSee Video Converter lets you create a to-do list of videos to convert, and set the program to shut down after conversion is completed, or pause/re-start the conversion at your convenience.

Convert Videos and Audio Among All Popular File Formats

Convert between all kinds of video and audio formats, including AVI, MP4, MKV, FLV, 3GP, 3G2, WMV, MOV, VOB, MPG, PSP, M4V, VCD, DVD, ARM, ASF, AVS, SWF, MPEG, MTV, OGG, H261, H263, H264, MP3 and more. See a complete list of [supported formats and devices](#).

Adding and Converting Videos

You can queue a list of files to be converted to a number of different file types to be played on a variety of devices.

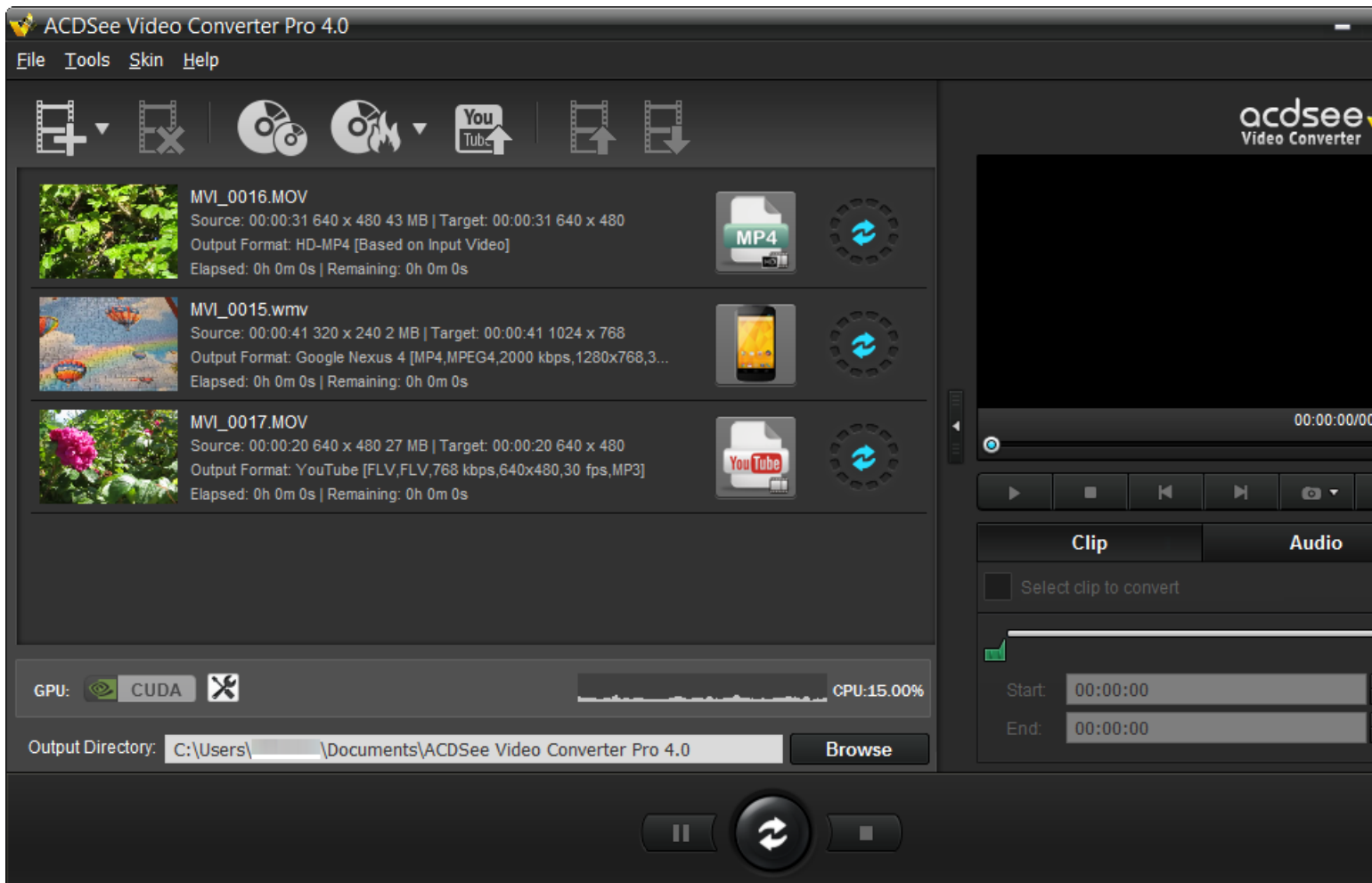
Adding Files to the Input Video List

You can add files to the Input Video List in preparation for conversion.

To Add Files:



1. Click the **Add Video Files...** button.
To add a folder, select **Add Folder...** from the drop-down menu.
2. Select one or more files from the **Add Video Files** dialog box. Use **CTRL + click** to select multiple files.
Press **Open**.



CPU Performance Graphic:

At the bottom of the window, you will see a CPU performance graphic. This reflects the current usage of your CPU and will help you decide if your CPU has the resources required for converting videos.

If You Have an NVIDIA Graphics Card That Supports [CUDA](#):

If you have an NVIDIA graphics card that supports CUDA, you can select it to handle your conversion, thereby freeing up your CPU for other tasks. Select to use your NVIDIA graphics card by clicking the CUDA graphic on the left side. You can also make this change on the Performance tab of the [Options](#) dialog.



Please note that if your video card does not support CUDA, this option will be disabled.

Convert One or More Videos to a Different Format

After you have added your files to the Input Video List, you can convert them to a wide variety of formats.

To Convert Videos:

1. Select the video you would like to convert. If you would like to select multiple files, do one of the following:
 - Drag your cursor over the files.
 - Press **CTRL** while clicking the specific files you want.



2. Your files display an icon of their current format. Ex.) Click this icon to open the **Choose Format** dialog box. Configure your format settings as described in the table below.

Choose Format Dialog Box

		Output Type	Select the output type you would like to convert your files to from the drop-down menu according to the device you would like to play your video on.
		Output Format	Select the specific device from the drop-down menu of options available for the output type you selected. Next, select from the drop-down menu of parameters for that device.
		Format Details	<p>This section displays the format details of the output you have selected, including:</p> <ul style="list-style-type: none"> • Video Frame Size • Video Bitrate • Video Codec • Audio Codec • File Format <p>This section also includes the Detailed Settings button. Click the Detailed Settings button and configure the options as described in the Detailed Settings Dialog Box table below.</p>
Split	Split By	<p>If you would like to split your video, check the Split By checkbox and select whether you would like to split your video by:</p> <ul style="list-style-type: none"> • Size (in MB) <p>or</p> <ul style="list-style-type: none"> • Time (in minutes) 	
		Apply to all	Check this box to apply the above settings to all of the files in the Input Video List.

- Once a new Output Type has been selected, the Detailed Settings button becomes enabled. Click the **Detailed Settings** button to alter additional video and audio parameters.



Changes made within the **Detailed Settings** dialog can be saved as a [User-Defined Profile](#).

Detailed Settings Dialog Box

		Format	
Video Parameters	Codec	Video codec specifies the type of video data compression you would like ACDSee Video Converter to use.	
	Size	Select the video image size.	
	Bitrate	Select the bitrate to determine how much data will go to the screen per second on playback. A higher bitrate allows for a higher quality picture, however, it also increases the file size.	

Audio Parameters	Frame Rate	Select the frame rate to determine how quickly the picture refreshes.
	Codec	Codec specifies the type of audio data compression you would like ACDSee Video Converter to use.
	Sample Rate	Sampling describes the data rate of a sound recording. A higher sample rate allows for higher quality sound, however it also increases the file size.
	Channel	From the drop-down menu, select 1 to have the same sound come out of the left and right speakers, or, 2 , to have different sound come out of the left speaker versus the right.
	Bitrate	Select the bitrate to determine how much audio data will go to the speakers per second on playback. A higher bitrate allows for a higher quality sound, however, it also increases the file size.

- Click **OK** to close the Detailed Settings dialog box.
- Click **OK** to close the Choose Format dialog box.
- To specify further conversion and completion settings, such as setting where your completed files should be placed, see [Setting the ACDSee Video Converter Options](#).



- Click the **Convert** button to begin the conversion.



Once converted, you can locate the output video by right-clicking the file and selecting **Locate Output Video**.

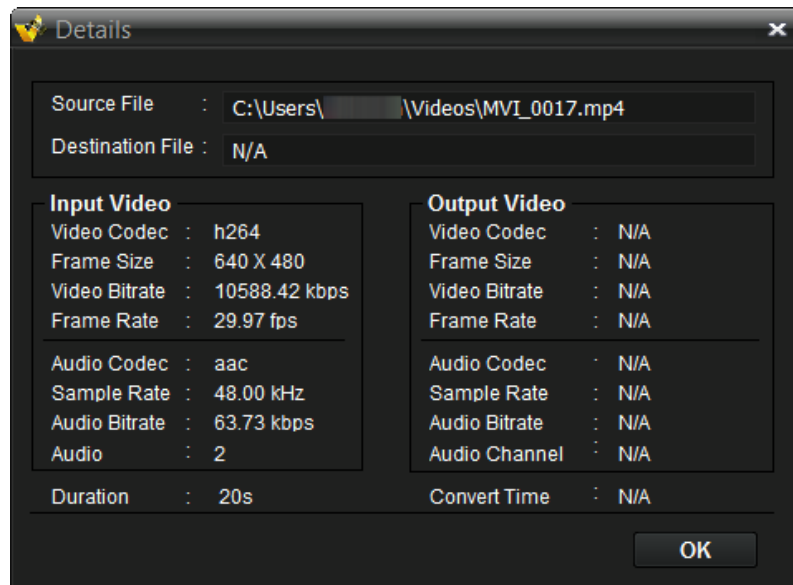


ACDSee Video Converter converts all files in the Input Video List. If you have converted a file and then add another file to convert, remove the previously converted file from the list, unless you would like to convert it to another format.

Viewing Video Details

To View the Details of an Added Video File:

- Right-click the file in the Input Video list and select the **Details** option.
The details of the Input and Output video are displayed.



Saving Detailed Settings

Changes made within the Detailed Settings dialog can be saved as a User Defined profile.

To Save the Detailed Settings as a User Defined Profile:

1. Click the **Detailed Settings** button (if enabled).
2. Modify the settings.
3. Click **OK**.
4. In the confirmation dialog that appears, click **OK**.
5. Enter the name for the profile and click **OK**.

To Select Your Saved Detailed Settings:

1. From the Main window, click the **Choose Format** button. Ex.)
2. Click the **Output Type** drop-down arrow and select the **User Defined** option.
3. From the Output Format drop-down, select your desired User Defined profile.
4. Click **OK**.



Viewing the Conversion Log

After a file is converted, a log of the conversion details is generated. You can view the information and click the **OK** button to close the window.

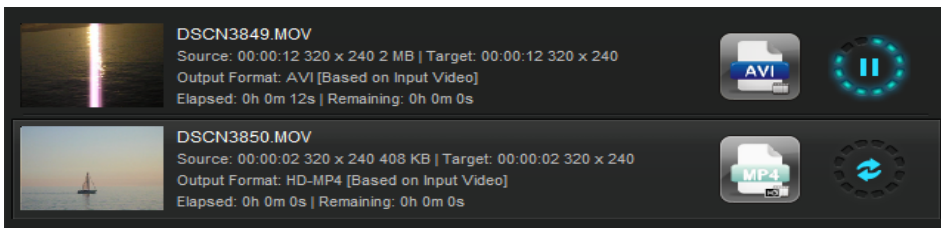
You can view the conversion log at any time.

To View the Conversion Log:

- From the Main window, click **Tools** and select **Conversion Log**.

Stopping Video Conversion

While the file is converting, a progress spinner is displayed around the Convert button, as seen below.



To Cancel the Conversion:

- Click the **Stop** button, found to the right of the Convert button:



You can then choose to convert your file to another format, or remove it from the list and add another video file.



Right-click a file to view the context-menu.

Removing Files from the Input Video List

You can remove files that have been added to the Input Video list.

To Remove Files, Do One of the Following:

- Select one or more files and click the **Remove** button.
- Right-click the file and select the **Remove** option.





Previewing Videos

This feature allows you to preview the selected video.

To Preview Your Videos:

1. Select the video file you want to preview from the Input Video List.
2. In the Previewer pane to the right side of the Main window, use the following buttons to play and control your video:

	Play the video.
	Pause the video.
	Stop the video.
	Return to the previous video in the Input Video List.
	Advance to the next video in the Input Video List.



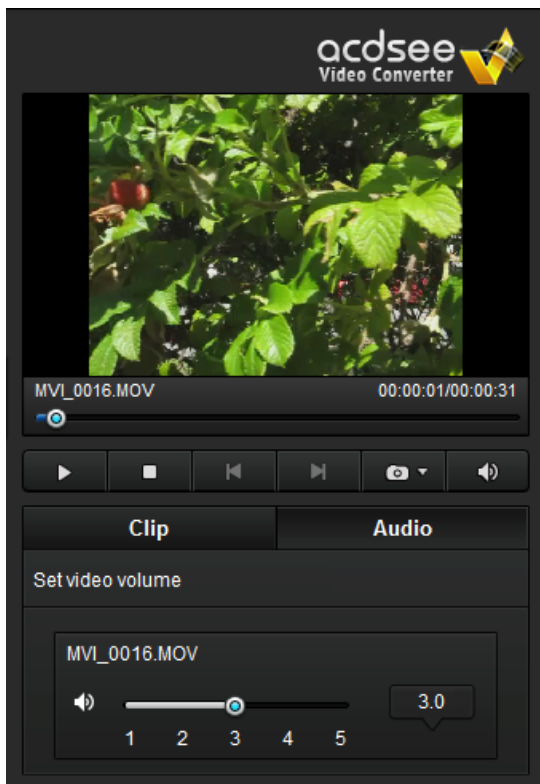
Adjusting Video Output Volume

This feature allows you to adjust the volume of your video files before converting them.

To Adjust Audio Track Volume:

1. Select the file you would like to adjust the output volume of in the Input Video List.
2. Click on the **Audio** tab.
3. Adjust the volume slider to the desired volume.
4. Play your video in the Previewer to check that the volume level is appropriate.



5. Click the **Convert** button to begin the conversion.



Taking Snapshots


This feature allows you to take screen captures of your videos.

To Create a Snapshot, Do One of the Following:


- Click on the snapshot button in the Previewer controls. 
- Click on the drop-down arrow of the snapshot button  in the Previewer controls, then select **Snapshot**.

To Locate Your Snapshots:

To locate your snapshots, you must open the snapshot folder.

1. Click on the drop-down arrow of the snapshot button. 
2. Select **Open Snapshot Folder**.



To Change the Snapshot Format:

1. Click on the drop-down arrow of the snapshot button. 
2. Click **Snapshot Format** and choose a format.

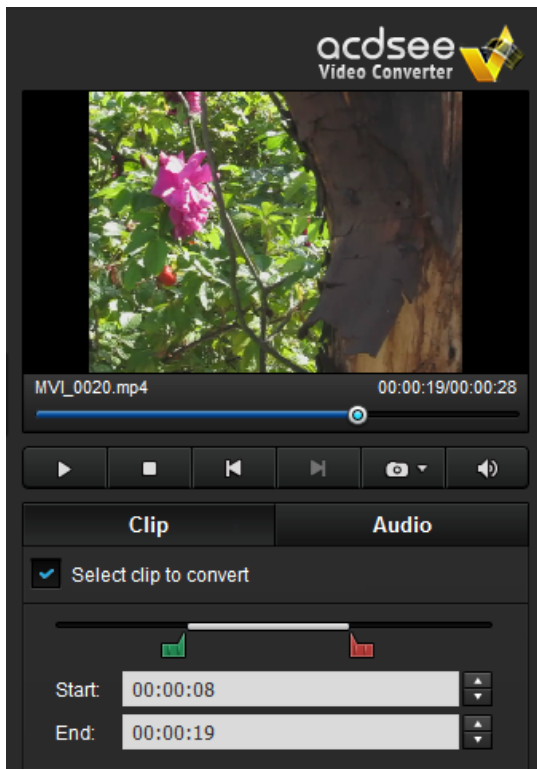
Clipping Videos

This feature allows you to clip out segments you want from the source video file. You can then convert or perform any other action with that clipped segment.

To Clip a Video

1. Select the file you want to clip in the Input Video List.
2. Check the **Select clip to convert** box on the Clip tab of the Previewer pane.
3. Slide  and  to cover the segment of the video you want to convert.

4. Click the **Convert** button to begin the conversion.



Setting the ACDSee Video Converter Options

Settings include options you can configure to customize and automate ACDSee Video Converter's functionality.



After making changes, you have the option of returning to the original default settings.

To View the Options and Make Changes:

- From the Main window, click **Tools | Options**.
You can view and change the settings as described in the table below.

To Save Changes and Close the Options Window:

- Click **OK**.

To Close the Options Window Without Saving Changes:

- Click **Cancel**.

To Return to the Original Default Settings:

- Click **Reset**.

The Options Dialog Box

General Tab

These settings affect the basic operations of ACDSee Video Converter.

Application Behavior

Automatically check for updates.

ACDSee Video Converter will automatically ensure that you are running the latest version.

When exiting, prompt will show if it's still executing.

ACDSee Video Converter will warn you if you are trying to close the application while an action is still being performed, such as burning a DVD or converting a video.

Show <Getting Started Guide> on startup.

This displays the Getting Started instructions in the Main Window each time you open the application.

Prompt when removing tasks.

When you remove files from the Input Video List, ACDSee Video Converter double checks that you want to continue this action.

Prompt when adding unsupported files.

ACDSee Video Converter will notify you when you are trying to add files to the Input Video List that are not supported by the program.

Conversion Tab

This tab includes options for converting your videos.

Video Aspect Ratio

Aspect ratio is the ratio of the width of the video to its height.

Keep input video aspect ratio.

When trying to convert a file with an inconsistent input video and output video size, ACDSee Video Converter will maintain the aspect ratio of the video zoom. In other words, the picture will not be stretched or cropped.

Fill space around input video to fit output video aspect ratio.

When the input video and output video size are inconsistent, ACDSee Video Converter will fill the empty areas around the picture.

Automatically clip the edges of the input video to fit output video aspect ratio.

ACDSee Video Converter will clip the picture to fit the screen when the input video and output video size are inconsistent.

CPU

Executing when CPU is normal.

ACDSee Video Converter will run your conversion tasks when your computer is in normal operation mode. This may have a negative impact on how fast other programs run at the same time.

	Executing when CPU is idle.	ACDSee Video Converter will run your conversion tasks when your computer is idle. This will ensure that the conversion process will not have a negative impact on how fast other programs run.
Performance Tab	These settings control CPU usage.	
	GPU	Graphics Processing Unit
	Enable GPU Acceleration	This option will be enabled if your computer has an NVIDIA graphics card that supports CUDA . The encoding will be processed by your NVIDIA graphics card, rather than your CPU. This will free your CPU up to run other programs quickly during the conversion process and will accelerate conversion, particularly for output videos with an H.264 encoder. Select this option to convert faster.
	Converting Quality	<ul style="list-style-type: none"> • Fast • Medium • Slow Select your video's conversion speed. The Fast setting will convert quickly, but will not preserve video quality as well as the Slow setting.
	Number of Tasks	You can select up to three concurrent conversion tasks.
Completion Tab	These settings define how the program responds after conversion is complete.	
	Conversion Completion Settings	
	Output Directory	You can select the location where you would like the converted files to be placed.
	Show notification for ... seconds when all tasks are completed.	Select how long you would like to receive notification for once your conversion tasks have been completed.
	Play sound ... when a task is completed.	Select a sound to be played as notification once your conversion tasks have been completed.
	Close ACDSee Video Converter after completing all tasks.	Check this option to have ACDSee Video Converter close when all conversion tasks have been completed.

Changing the ACDSee Video Converter Skin

You can change the look of ACDSee Video Converter by choosing between various skins.

To Change Skins:

1. Select the **Skin** drop-down from the Main toolbar.
2. Choose a skin from the drop-down list.

Burning a DVD Disc

You can burn your video files onto DVD to watch on your TV or computer.

To Burn Your Video to DVD:

1. Insert a blank DVD into your disc drive. Your operating system may prompt you about what action you would like to take with your blank DVD. Close these dialogs.
2. In ACDSee Video Converter, Click the **DVD Operations** icon and select **Burn DVD Disc** from the drop-down menu.



3. The Burning Disc dialog box will open. Configure the settings as described in the table below.



4. Press the **Convert** button to begin the burning process.
5. Click **OK**.

Burning Disc Dialog Box

Drive Info	
DVD Title	Type a name for your DVD.
Drive drop-down menu	Select the drive where your blank DVD is located.
File Path	Browse to find the video you would like to burn.
Television	
Television System	<p>Choose the Television System settings,</p> <ul style="list-style-type: none"> • NTSC <p>or</p> <ul style="list-style-type: none"> • PAL <p>to set the video standard for your DVD based on your region.</p>
Video Scale	<p>Choose between a</p> <ul style="list-style-type: none"> • 4:3 <p>or</p> <ul style="list-style-type: none"> • 16:9 <p>width to height ratio, depending on the size of the screen your DVD will be played on.</p>
Disc Type	<ul style="list-style-type: none"> • Set DVD5 (4500MB) for a single-sided disc. • Set DVD9 (8500MB) for a double-sided disc.

Creating an ISO

You can create a packaged ISO file.

To Create an ISO:

1. In ACDSee Video Converter, click the **DVD Operations** icon and select **Burn DVD ISO** from the drop-down menu.






2. The Burning ISO dialog box will open. Configure the settings as described below.



3. Press the **Convert** button to begin creating.

Burn ISO Dialog Box

ISO Name	
File Name	<p>Press the Browse button, select the location you would like to put the packaged ISO file and enter a name for the file in the field. </p> <p> When entering the file name, you must append .iso to the end of the name.</p> <p> If you are typing in the ISO file name without browsing, you must ensure that the ISO Name field contains the complete path.</p>
Video Files	
File Name	Browse and select the video files you would like to package.
ISO Format	Specify the ISO file package type.
UDF	The preferred disk format, UDF (Universal Disk Format) allows an operating system to read, write and modify data stored on optical media created by a separate operating system.
ISO9660	<p>This is the original file system for CD data discs and is recognized on most operating systems. Choose:</p> <ul style="list-style-type: none"> • Level 1 • Level 2 <p>Level 1 offers the most interoperability, but requires file names that are upper case and limited to eight characters with a three-character extension, similar to a DOS file name, but only alpha, numeric and underscore may be used. Level 2 supports longer, more unique file names, but may not be supported on every drive. Another disadvantage is that files may only be stored in a directory structure no more than eight levels deep.</p>
ISO9660 + Joliet UNICODE name extension	<p>This file system acts the same way as ISO9660, but does not have the same restrictions on file names. This file system allows for a file name up to 64 characters long and can include non-Roman characters. It also supports a deeper directory structure. This format should be selected if there may be any concern about compatibility on the devices the disc will be used with.</p>

Ripping a DVD

You can extract the files contained on a DVD.

To Rip a DVD:

1. Insert the disc you would like copied to your computer.



2. In ACDSee Video Converter, select the **DVD Ripping** button.
3. In the Ripping Disc dialog box, select the Source Disc, (what drive your DVD is located on), from the drop-down menu.
4. Under Output Directory, click **Browse** to specify where you would like the copied files to go.
5. Press **OK**.



6. Press the **Convert** button to begin copying.

Uploading Your Videos to YouTube®

You can upload your video content to YouTube to share privately with friends or publicly with the YouTube community.

To Upload Your Videos to YouTube:



1. Click the **Upload to YouTube** button and fill in the fields in the **Upload** dialog box, as described in the table below.
2. Click **OK**.



3. Click the **Convert** button. Your video will be uploaded to YouTube as soon as the progress spinner is complete. If you have opted to share your video on Facebook or Twitter, they will now open in your browser and prompt you to enter your user name and password.
4. Navigate to YouTube.com to see or share your video.

Upload Dialog Box

Upload video information	
Account	Enter your YouTube user account name. <ul style="list-style-type: none">• Add: saves your user account name.• Delete: deletes your user account name.
Password	Enter your YouTube account password.
Upload Video	Select Add File to locate the video you would like to upload.
Title	Enter a title for your video.
Description	Enter a description of your video.
Category drop-down	Select the category you would like your video to be listed under on YouTube.
Tags	Enter tags you would like to assign to your video. These tags will help to determine when your video shows up in searches on YouTube.
Private checkbox	Check the Private checkbox if you want your video to be only visible to you.
Share on Facebook checkbox	Check the Share to Facebook checkbox if you want to share your video on Facebook. After you have uploaded your video to YouTube, Facebook will open and you will be prompted to enter your Facebook user name and password.
Share on Twitter checkbox	Check the Share to Twitter checkbox if you want to share your video on Twitter. After you have uploaded your video to YouTube, Twitter will open and you will be prompted to enter your Twitter user name and password.

Supported Formats and Devices

Supported Input Video Formats

3g2	mtv
3gp	mve
4xm	mxp
asf	nsv
avi	nut
avs	pva
cpk	r3d
dif	rm
dv	rmvb
dxa	roq
f4v	rpl
flic	seq
flv	smk
h261	str
h263	swf
h264	thp
m1v	ts
m2ts	vqa
m4v	vid
mjpg	vob
mjpeg	vro
mkv	wc3
mov	webm
mp4	wmv
mpg	y4m
mpeg	yuv
mts	

Supported Output Video Formats

3gp	mpeg1
asf	ogg
avi	TS
dv	vob
flv	wmv
m4v	
mkv	
mov	
mp4	

Supported Output Devices

Apple

Apple TV	iPhone 4S
Apple TV2	iPhone 5
Apple TV3	iPhone 5S/5C
iPad	iPod Touch
iPad 2	iPod Touch 4
iPad 3	iPod Touch 5
iPad 4	iPod Classic
iPhone	iPod Nano
iPhone 3G	
iPhone 3GS	
iPhone 4	

Nokia

700	Lumia 820
808	Lumia 900
2730	Lumia 920
2700 Classic	C5
3000	C6
5000	C7
5130	E7
5230	E63
5233	E71
5235	E72
5530	E75
5630	E90
5800 ExpressMusic	N7x
6000	N8 10 Internet Tablet
6300	N8x
6700	N9
7000	N9x
7230	N73
8000	N76
Asha 201	N79
Asha 302	N82
Asha 306	N86
Asha 311	N95
PureView	N96
Lumia 520	N97
Lumia 610	N900
Lumia 620	X3
Lumia 710	X6

Lumia 720
Lumia 800

X7

Samsung

Ativ S	Galaxy Pro GT-B7510
Behold	Gusto
C3010	Gravity Touch
C3303	GT B7722
Captivate	I7500
Corby	I900 Omnia
Epic 4G	Intensity
Fascinate	Intercept
Focus	Mesmerize
Galaxy 5	Metro 3530
Galaxy Ace	Moment
Galaxy Ace 2	Tocco Icon
Galaxy S	SGH-E1XX_E7XX
Galaxy S2	SGH-F480I
Galaxy S3	SGH-F488E
Galaxy S4	SGH-F-J
Galaxy S Advance i9070	SGH-F-X
Galaxy SII	SGH-G/I/U/D/W/E8XX
Galaxy Spica	SGH-M/L
Galaxy Note	SGH-P
Galaxy Note 2	SGH-W-U-I
Galaxy Note 3	Solstice
Galaxy Tab	Star S5230
Galaxy Tab 10.1	Strive
Galaxy Mini	Transform
Galaxy Mini 2	Wave723
Galaxy Mini 2 GT-S6500	Wave II GT-S8530
Galaxy S3 Mini	YP Q1
Galaxy Young	
Galaxy Fit	

RIM Blackberry

8520	Pearl 8120
8700	Pearl 8220
Bold 9000	Pearl 8800
Bold 9790	Pearl 8830
Bold 9900	Pearl Flip
Bold Series	Playbook
Curve 8300	Storm 3G
Curve 8310	Storm 9500

Curve 8500
Curve 8900
Curve 9360
Curve 9320
Q10
Pearl 3G
Pearl 8100

Huawei

Ascend D Quad
Ascend D1
Ascend D2
Ascend G300
Ascend G330
Ascend G350
Ascend G510
Ascend Mate

Storm Series
Torch 9800
Torch 9810
Torch 9860
Tour Series
Porsche Design P'9981
BlackBerry 10

Ascend P1 LTE
Ascend P2
Ascend P6
Ascend W1
Blaze U8510
Vision
Virgin Media VM720
Y 100

LG

Ally VS740
Arena GT950
Banter AX265
Banter UX265
Bliss UX700
Google Nexus 4
Ego WiFi
Prada 3.0
Spectrum
Chocolate Touch VX8575
Dare VX9700
enV Touch VX11000
Fathom VS750
GB210
GD510 Cookie Pop
GM200
GW820
Incite CT810
KM900 Arena
KP500
KP500 Cookie

KS360
Neon GW370
Optimus
Optimus Vu
Optimus 2x
Optimus 4X HD P880
Optimus One P500
Optimus L3
Optimus L7
Optimus G Pro
LGOptimus 3D
P500
Prime
Quantum
Spyder 2 LG840
Tritan UX840
Versa VX9600
Vortex
VU CU915
VU CU920
Xenon GR500

HTC

8X
8S

Magic
MyTouch 3G

7 Mozart	MyTouch 4G
7 Pro	One
Aria	One S
Arrive	One SV
ChaCha	One V
Desire HD	One X
Desire C	One X+
Desire S	One XL
Desire X	Pro 7
Diamond	Radar
Dream	Radar C110E
Droid Eris	Rhyme
Droid Incredible	Salsa
Droid Incredible 2	Sensation
Evo 3D	Sensation XE
EVO 4G	Sensation XL
Explorer	Surround
Flyer	T-Mobile G1
Gratia	Tattoo
HD2	Thunderbolt
HD 7	Titan
Hero	Touch HD
Incredible S	Vivid
Imagio	Wildfire
Inspire 4G	Wildfire S
Legend	

Motorola

A/E/Q/VE/V/U Series	Milestone
Atrix	Motoactv
Backflip	Motorokr E6
Bravo	Motoluxe
CLIQ/CLIQ XT	Motosmart
Defy+	Pro+ MB632
Defy Mini	Quench
Devour	Razr
Dext	Razr HD
Droid2	RAZR i
DroidX	V3 Series
Droid 4	V3X
Droid Series	W270/W50
Droid RAZR XT910	XOOM
Droid Razr Maxx	XT720
EM	Z/ZN/L Series

Flipout
i1

Z3

Sony Ericsson

Cedar
Equinox
Vivaz
Mix Walkman
Walkman
W518A
W580I
W700I
Xperia Active

Xperia Arc
Xperia Arc S
Xperia Neo
Xperia Play
Xperia ray
Xperia x8
Xperia x10

Sony

Xperia Go
Xperia Ion
Xperia J
XperiaMiro
Xperia P
Xperia S

Xperia T
XperiaTipo
Xperia U
Xperia Z
Xperia ZL

Microsoft

Zune

Game Consoles

PS3
PSP
PS Vita

Wii
Xbox

Portable Media Players

Archos
Archos 101 Internet Tablet
Archos 70 Internet Tablet
Archos 43 Internet Tablet

Archos 5 Internet Tablet
Creative
Iriver

